



# FOWEY HARBOUR

## PASSAGE PLAN

**NOT TO BE USED FOR NAVIGATION**

This plan has been produced in consultation with commercial users for the guidance of Masters.

It is to be agreed between the Master and Pilot before commencing passage.

The Master is at all times responsible for the safe navigation of his ship, including berthing and unberthing operations.

Courses are indicative only and may be modified to suit prevailing conditions.

For depths alongside jetties and within the channel refer to the latest FHC sounding chart

**The Pilot has been trained in Bridge Resource Management and welcomes the support of your bridge team.**

**Please bring to the pilots attention any matters of concern**

### CONTACTS

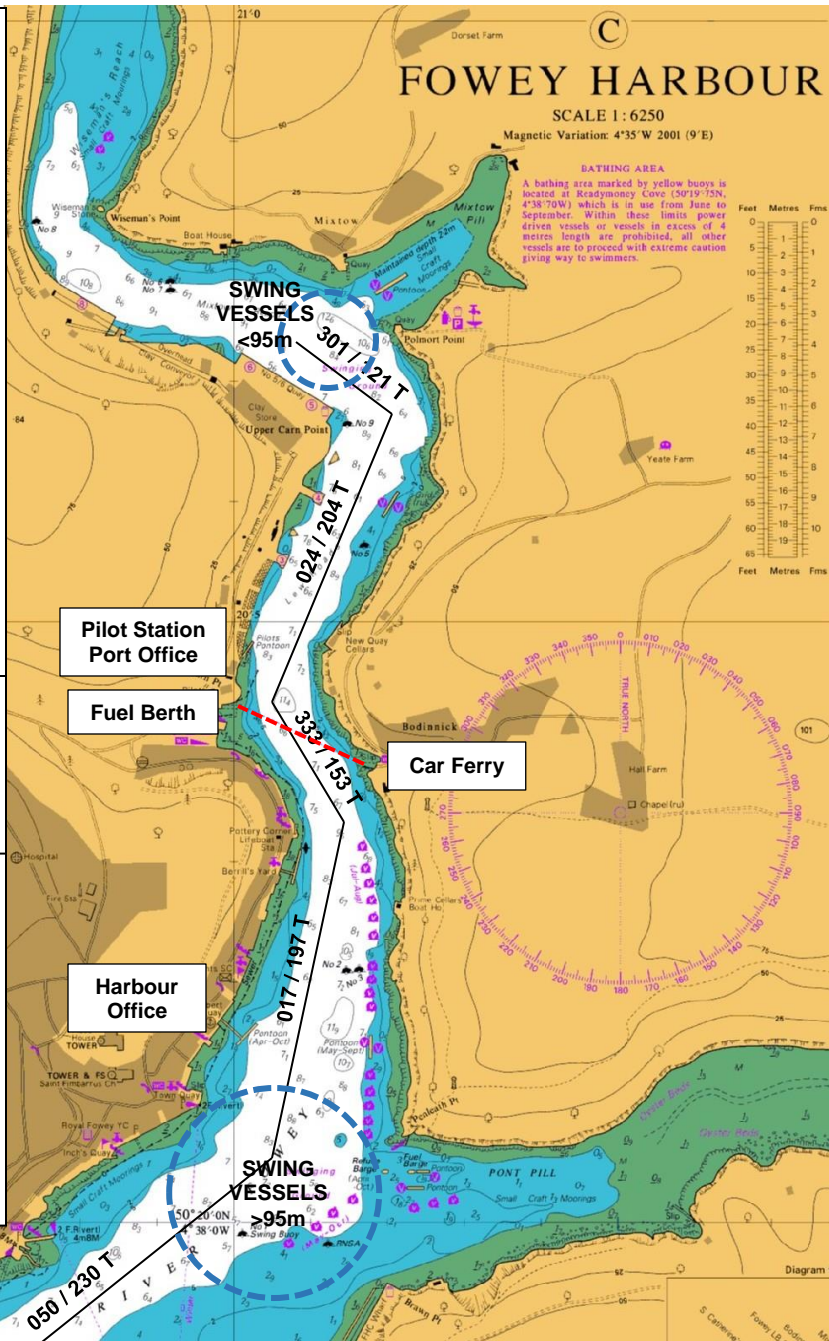
#### PILOTS

Tel: +44 (0)7890 555563  
 Email: office@foweypilots.com  
 VHF Ch. 9  
 Call sign 'Fowey Pilots'

#### FOWEY HARBOUR OFFICE

Tel: +44 (0)1726 832471  
 Email: reception@foweyharbour.co.uk  
 Website: www.foweyharbour.co.uk  
 VHF Ch. 12  
 Call sign 'Fowey Harbour Radio'

 Swing Area



### AREAS OF INCREASED RISK

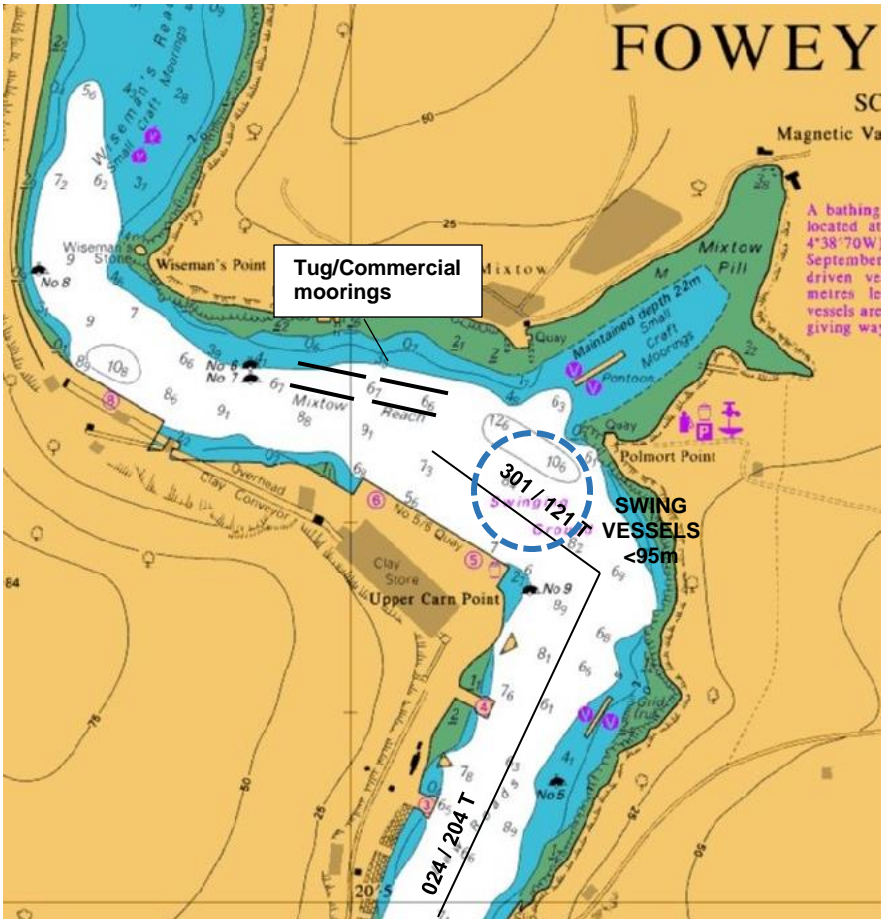
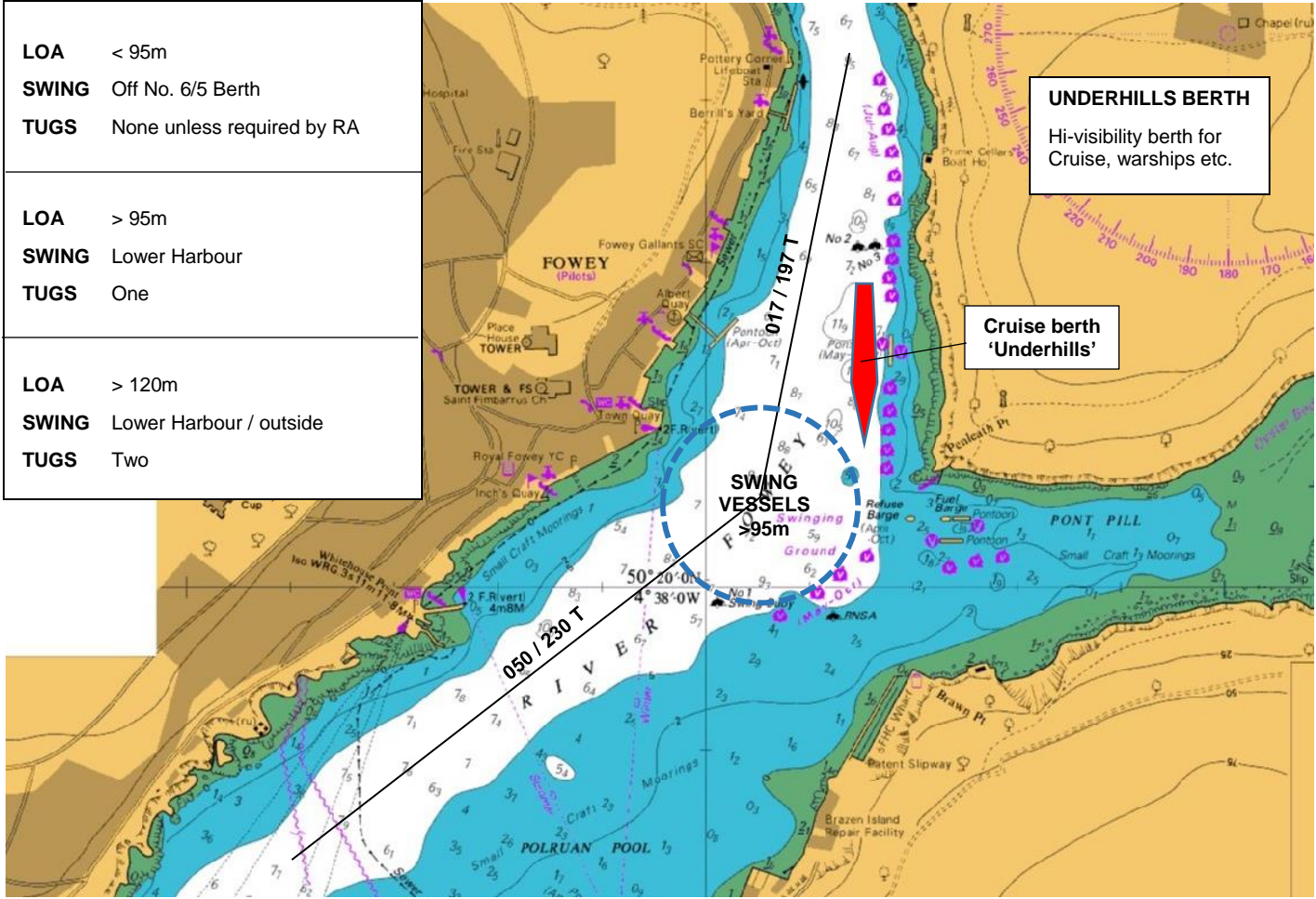
- Sailing/racing in the harbour – crossing shipping channels, particularly busy at weekends
- Car Ferry
- Small vessels – active all year round but particularly in summer, late at night with no lights

### NOTES

- VHF call sign: "Fowey Harbour Radio"
- Vessels under control of a Pilot must call Fowey Harbour Radio on VHF Channel 12 prior to entry/slipping
- Restricted Visibility – conditions apply. See LNTM
- Controlled Vessel Movement – special precautions apply
- Car Ferry – vessels subject to compulsory pilotage must establish VHF communication with the car ferry and sound signals in accordance with Byelaw 22(1) prior to passing in or out
- Harbour Masters permission required for vessels in excess of 20m LOA to proceed north of Prime Cellars



<b>LOA</b>	< 95m
<b>SWING</b>	Off No. 6/5 Berth
<b>TUGS</b>	None unless required by RA
<b>LOA</b>	> 95m
<b>SWING</b>	Lower Harbour
<b>TUGS</b>	One
<b>LOA</b>	> 120m
<b>SWING</b>	Lower Harbour / outside
<b>TUGS</b>	Two



--- Swing Area